

APM Mosquito Control

Mosquitoes Are All We Do

How we started

IDEA



Great Lakes Mosquito Man

1995



Advanced Pest Management APM Mosquito Control



APM Mosquito Today

- Family owned and operated
 - Integrity Driven
 - **Specializes in full service Integrated Pest/Mosquito Management Programs**
 - Programs are designed on needs of the community and implemented based on Mosquito Control Industry Standards
- Serve Municipal, Commercial, Golf Course, HOA, and Individual Clients throughout Michigan**

Integrated Pest Management

"To control insect pests in an efficient and economical manner while preventing damage to humans, wildlife and the natural environment"

Licensing and Registration

- ▶ All field technicians employed by APM are certified in core and 7F (Mosquito Control) by the State of Michigan Department of Agriculture and Rural Development
- ▶ All Materials utilized by APM are registered and approved for mosquito control
- ▶ Member of Michigan Mosquito Control Association

Mosquito Control Program

- ▶ Mapping
- ▶ Larviciding
- ▶ Adulticiding
- ▶ Surveillance

New Jersey Light Trap

CDC Traps

- ▶ Citizen /Location Database

Mapping

► Inspection and Larviciding Map

APM survey for potential breeding sites

Breeding site- Mapped

Acreeage and Habitat type recorded

Reference number are assigned.

Temporary Sites and Permanent Sites

► Adulticiding

Township are divided into spray routes

Off Roads and No Sprays are marked

Larviciding

- ▶ Targets the mosquito in the larval stages in the water

- ▶ Aerial Larviciding

Product used- BTI (*Bacillus Thuringiensis Israeliensis*)

Natural occurring soil bacteria applied to granulated corn cobs

Works by imploding the mosquito larvae stomach

- ▶ Ground Larviciding

Power Backpack application of Vectobac (Bti) or Vectolex (Bs)

Done throughout the season

Rainfall Dependent

Catch Basins / Sewage Lagoons Retention Ponds/Ditches

- ▶ Sites vary depending on the community
- ▶ Catch Basins
- ▶ *Altosid XR IGR 150 Day Briquets*
- ▶ Sewage lagoons or retention ponds are inspected and treated throughout the season

Multiple larviciding products are used depending on the habitat

Adulticiding



- 16 Trucks
- ULV Unit - Ultra low volume
- Geo-Tracker- Computer system
- Truck Monitors- Monitor Four
- ATV Mounted Units and Backpacks

- Treatment is Weather Dependent

Temperature > 55°F and Wind speed < 10mph
No rain

Citizen/Location Database

APM collects information from citizen requests to create a database for the community

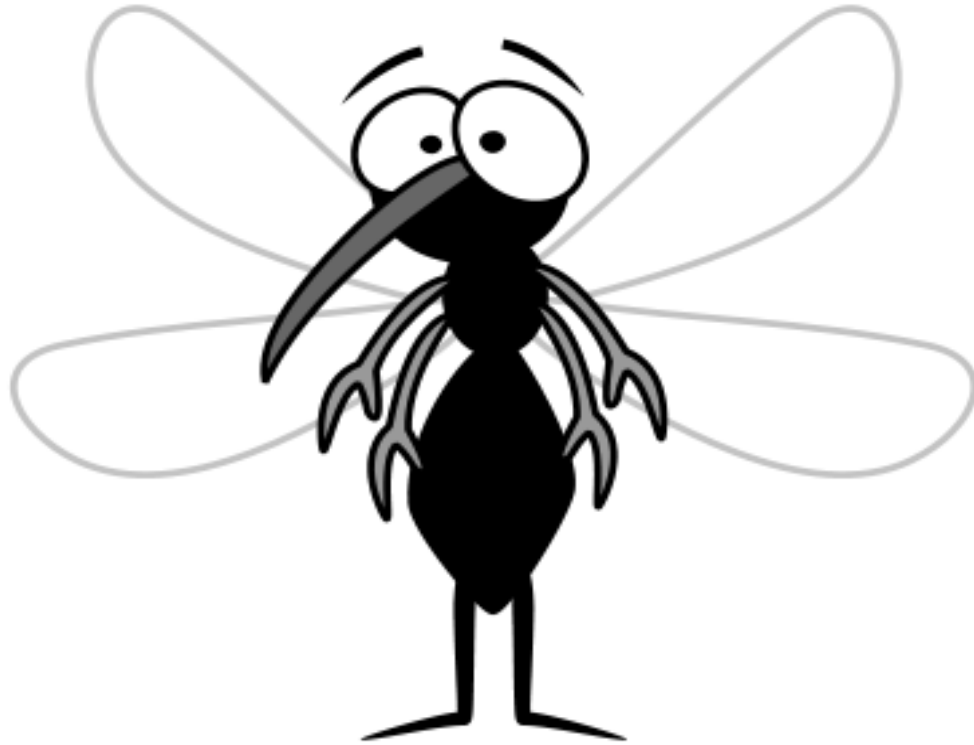
- Call List - A list is created and maintained of citizen requesting notification prior to treatment
- Shut Off List- Citizens who request no treatment on their property
- Off Road List- Citizens who request to be a off-road and meet criteria

Properties are staked for identification

Surveillance

- ▶ New Jersey Light Traps
 - ▶ Monitor population
 - ▶ Used to determine if adulticiding is needed > 20 females
- ▶ CDC Traps
 - ▶ Variety of locations
 - ▶ Disease Surveillance
 - ▶ Mosquitoes are collected and sent MSU Mosquito Lab for disease testing

CUSTOMER SERVICE



Integrity Driven

- Integrity is to live and tell the truth.
- It is honoring a commitment when you make a promise.
- It is doing the right thing no matter the outcome or what anyone else is doing.

Change Starts With Me

<http://www.ocls.info/Campaign/charactertraits/default.asp>

Our Goals

- ▶ To control nuisance and disease vector mosquitoes
- ▶ Develop and follow a IPM Program for our clients
- ▶ Provide Customers with the best over-all experience possible
- ▶ Maintain Customer Satisfaction

Customer Service



New Trends

